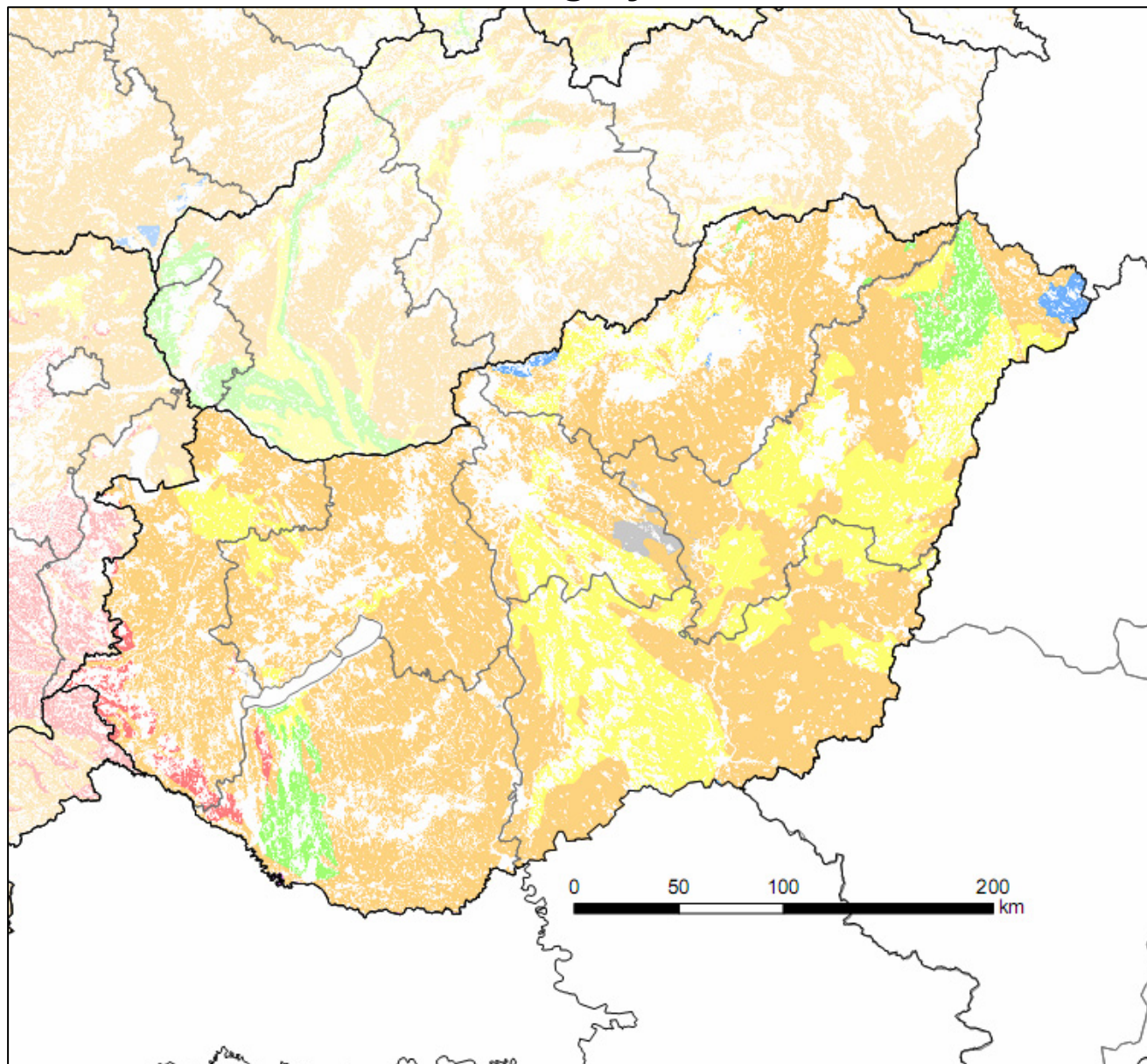


Hungary



The map above show predicted concentrations of a reference compound in ditches adjacent to fields where winter wheat is grown (concentrations in $\mu\text{g/l}$).
In the present example, the presence of the compound is assumed to originate from transport by surface runoff and erosion.

Grey	No data	Blue	0.001-0.01 $\mu\text{g/l}$	Yellow	0.1-1 $\mu\text{g/l}$	Red	> 10 $\mu\text{g/l}$
Purple	< 0.001 $\mu\text{g/l}$	Green	0.01-0.1 $\mu\text{g/l}$	Orange	1-10 $\mu\text{g/l}$		