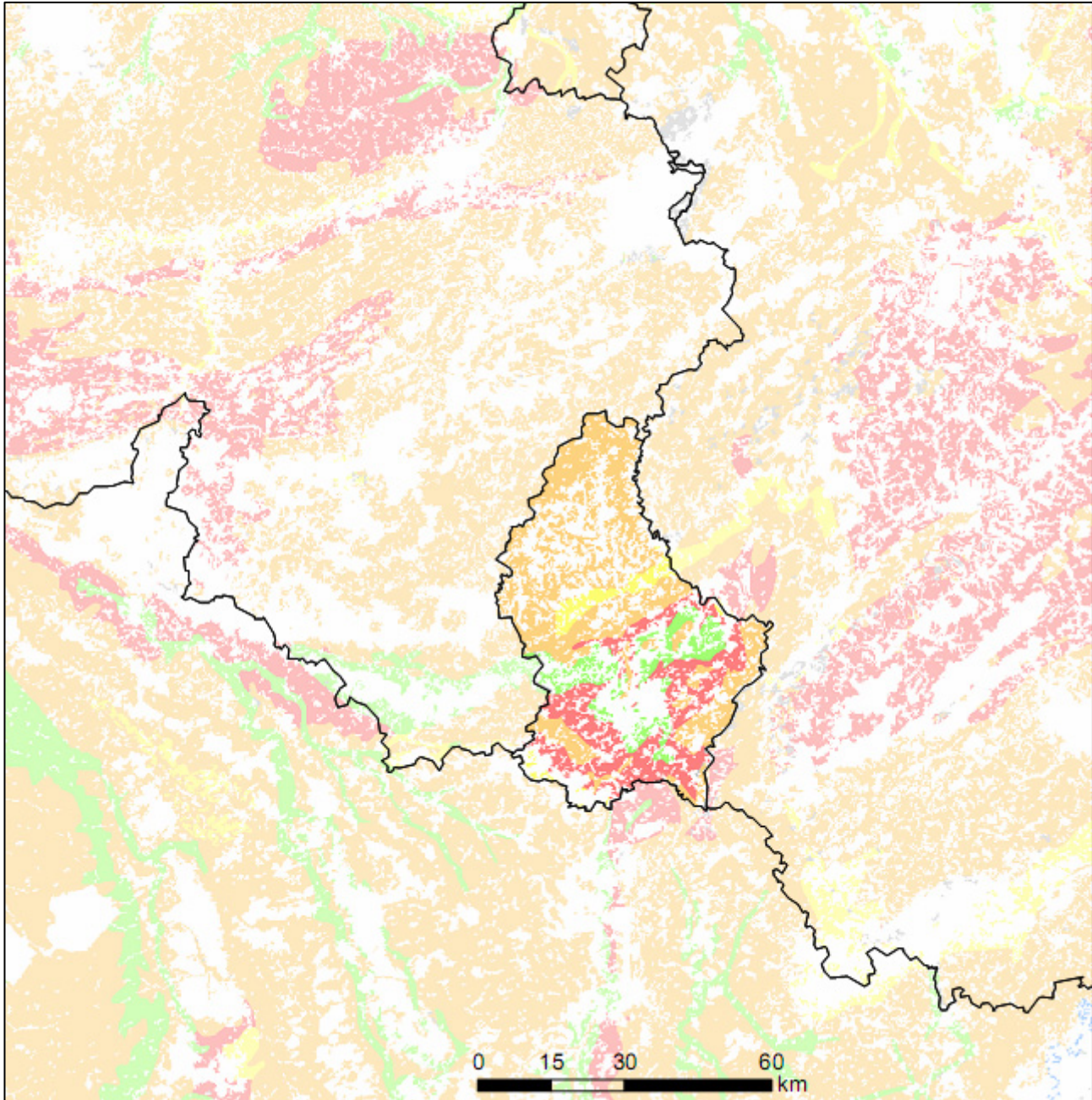


Exposure modelling and Environmental risk assessment using FOOTWAYS Pro Luxembourg



The map above show predicted concentrations of a reference compound in ditches adjacent to fields where winter wheat is grown (concentrations in $\mu\text{g/l}$).
In the present example, the presence of the compound is assumed to originate from transport by surface runoff and erosion.

| | | | | | | | |
|--------|-------------------------|-------|----------------------------|--------|-----------------------|-----|----------------------|
| Grey | No data | Blue | 0.001-0.01 $\mu\text{g/l}$ | Yellow | 0.1-1 $\mu\text{g/l}$ | Red | > 10 $\mu\text{g/l}$ |
| Purple | < 0.001 $\mu\text{g/l}$ | Green | 0.01-0.1 $\mu\text{g/l}$ | Orange | 1-10 $\mu\text{g/l}$ | | |